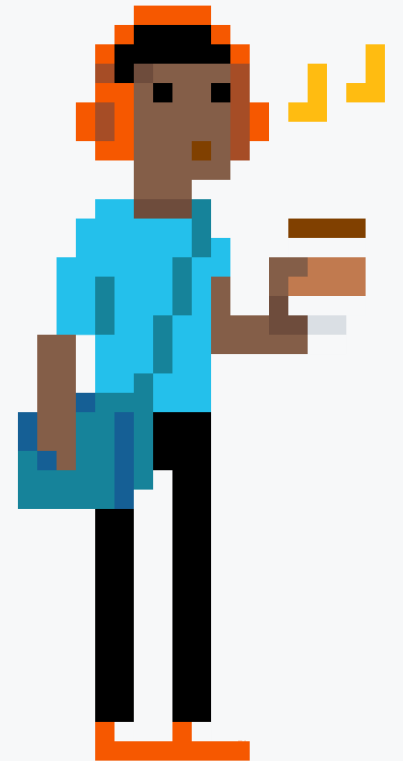


While you wait...

Why not let us know what topics you'd like us to cover next?

Take the short survey at:

squaredup.com/topics

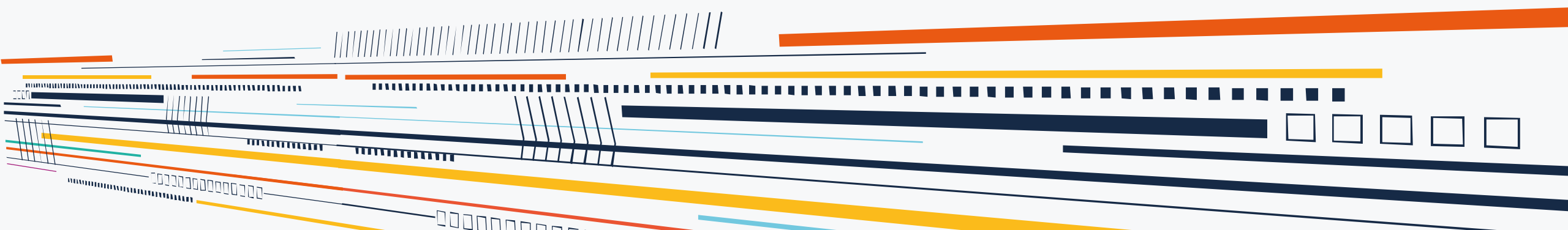




SquaredUp

Coffee Break Webinar Series

Introduction to Perspectives

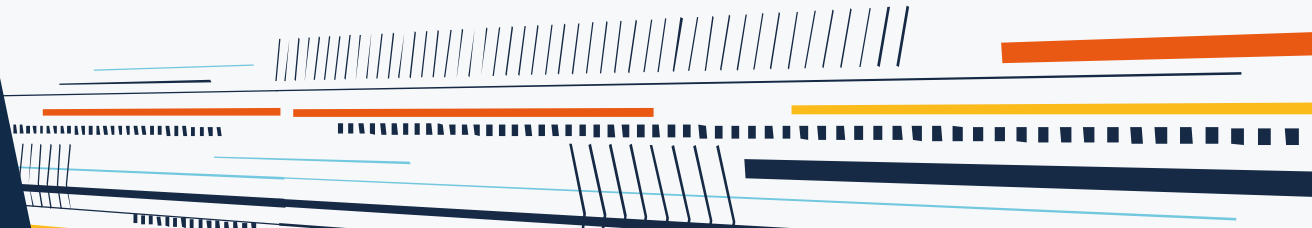


Topic

An introduction to perspectives

Discussion points:

- What is a Perspective
- Creating a custom Perspective
- Targeting
 - Unique object
 - Group members
 - Class



Targeting

When creating perspectives you have several **targeting** options:

- This object only
 - Unique perspective, ideal for DA's/Groups or that snowflake server
- Group
 - Great for application/team specific perspectives
- Class
 - Good if this perspective is always relevant for this component
- All objects
 - Useful if you have component based CMDB/Ticketing



Future Topics

Look out for future Coffee breaks covering **perspective** features like:

- Alert perspectives
- Application level perspectives
- Dashboards vs Perspectives
- Adding actions to perspectives
- Relative tile scoping
- Dashboard Mode
- Dashboard Packs
- Using data outside SCOM
- Monitor / Rule perspectives

Coffee Break: Resources

Let us know what you'd like us to cover:

squaredup.com/topics

See what's coming up next:

squaredup.com/coffee-break-series

Recordings and slides published via

squaredup.com/blog

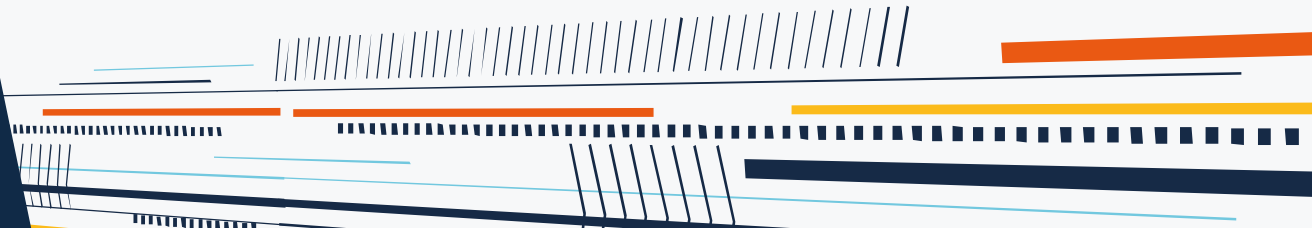
YouTube playlist for series

<https://www.youtube.com/playlist?list=PLJNXoiGgmTEu3yZRGpPNWQbG9WMyihZFs>

Follow up email, inc. resources,
sent out after each webinar



Q&A





SquaredUp

